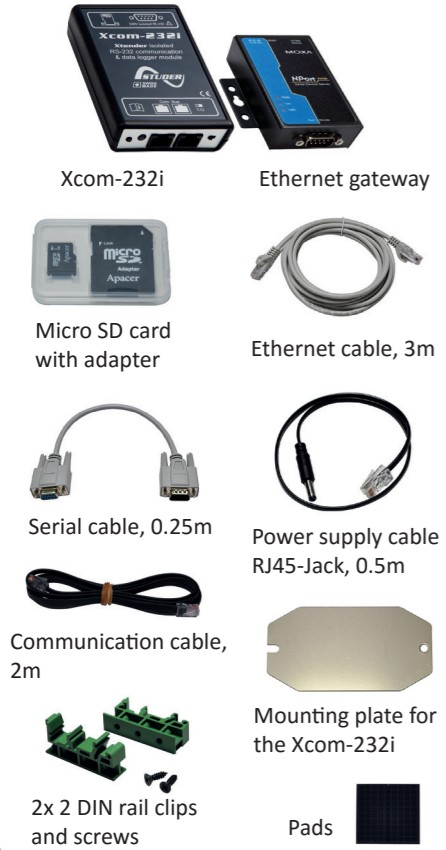
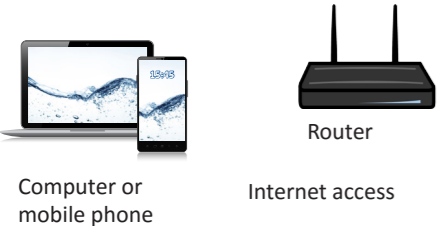


How to configure and to install the Xcom-LAN

1. Contents of the Xcom-LAN remote communication set



2. Additional items needed



3. Mount the different products within the Studer system

The products should be mounted on a smooth surface.

The distance between the Xcom-232i and the Studer system should **not exceed 10 meters**.

The distance between the Xcom-232i and the Ethernet gateway should not exceed 0.25 m.

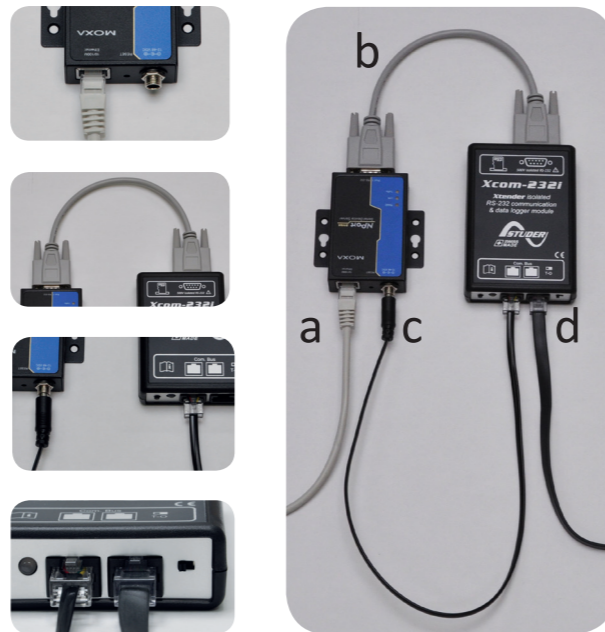
All cables you need are provided in the set.

ATTENTION!

The metallic casing of the Ethernet gateway is connected to the negative battery pole. Therefore it is necessary to **isolate its casing** from any metallic surface.

4. Wiring

- Connect the Ethernet cable between the Ethernet gateway and the router
- Connect the serial cable between the Ethernet gateway and the Xcom-232i
- Connect the power supply cable between the Ethernet gateway and the Xcom-232i
- Connect the communication cable between the Xcom-232i and the Xtender system

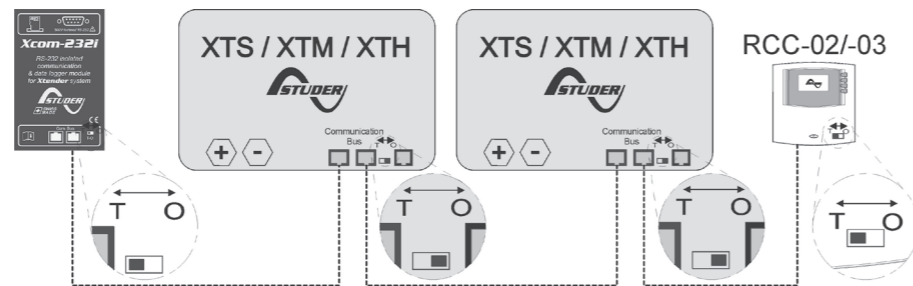


5. Set the terminations

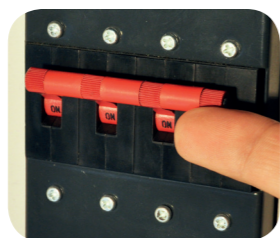
It is very important to set the terminations correctly for the functioning of the system.

With one device in the system the termination on the Studer device should be put to T as in "Terminated". With more than one device in the system all Studer devices should be put to O as in "Open" apart from the devices at the end of the communication chain. These devices should be put to T as in "Terminated".

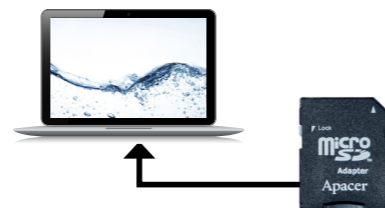
The termination switch next to the two RJ45 connectors on the Xcom-232i must be set in position T.



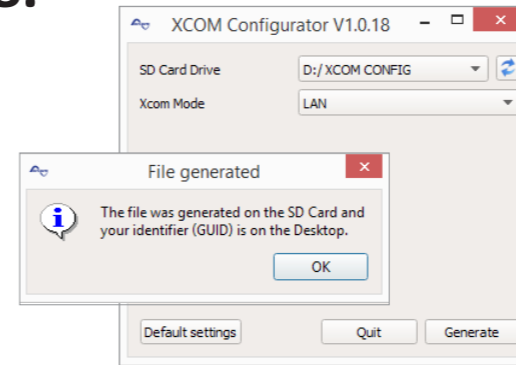
6. Turn on the power



7. Insert the Micro SD card into the computer



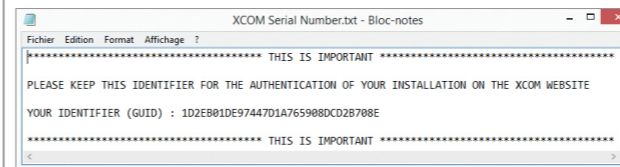
8. Run the Xcom-configurator



Choose "LAN" as Xcom mode. No other parameters are required. The gateway is already configured. Press "Generate" to save the parameter settings. A window will automatically confirm the successful file generation.

9. Take note of your GUID file

Close the message box and a text file with your identifier (GUID) will appear. This file is saved on your "Desktop" or in "My documents". The unique identifier (GUID) is required to link your installation with your account on the Xcom portal. Keep it safe.



10. Insert the Micro SD card into the Xcom-232i

Remove the SD card from the PC and insert it into the Xcom-232i. The setup process will start automatically and normally takes 1 second.



When the LED stops blinking red, the setup is finished.

ATTENTION!

The Xcom-232i needs to be powered during the setup process. Otherwise, the configuration will not be taken into account.

11. Xcom connects to the server

After the parameters are set and applied, the Xcom-LAN will automatically connect to the server and send a confirmation message to the RCC. If there is no message, the Xcom is not connected to the server. Use the FAQ of this Quick guide to see what could have gone wrong.



The Xcom-LAN is successfully installed!

Register the installation at: <https://xcom.studer-innotec.com> in order to control it remotely with the Xcom-LAN.

