

# Sun Sensor

## Irradiation measurement module and software

The LORENTZ Sun Sensor module and software allow the PS2 and PSk2 controller to accurately estimate irradiation levels and control the pump based on this.

The Sun Sensor function can be configured to offer the pump mechanical protection from repeated starts and stops due to low irradiation. The Sun Sensor function can also be configured to switch external devices via the output terminal.

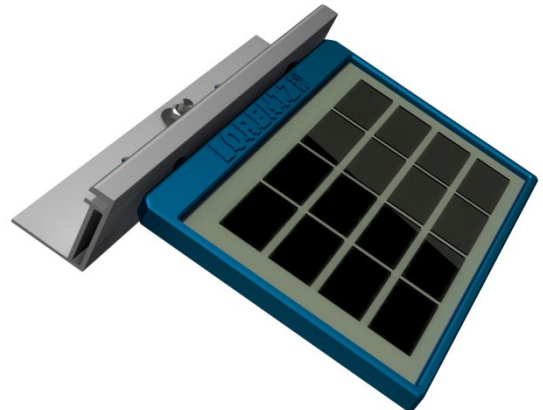
Each module is tested and specially calibrated for use with the PS2 and PSk2 system. The module also includes a software license to use the features which is accessed via the item serial number.

This Sun Sensor module is included with any PS2-1800 or PS2-4000 controller and any PSk2 controller.

For PS controllers (non PS2) refer to the SunSwitch Datasheet.

## ORDER INFORMATION

- **Item no.:** 19-005030
- **Product name:** Sun Sensor module



## TECHNICAL DATA

- Open circuit voltage  $V_{oc} = 10.2 \text{ V}$
- Short circuit current  $I_{sc} = 0.19 \text{ A}$
- Wire size:  $2 \times 1.0 \text{ mm}^2$  / AWG 18, waterproofed
- Mount in parallel to the solar array
- PS2/PSk2 manual with further information is available in partnerNet
- Meets the requirements for CE

## DIMENSION/WEIGHT

- Packaging dimensions: 180 x 205 x 60 mm  
7.08 x 8.07 x 2.36 in
- Total weight: 0.6 kg / 1.33 lbs