

# Sacrificial Anode for 4" and 6" motors

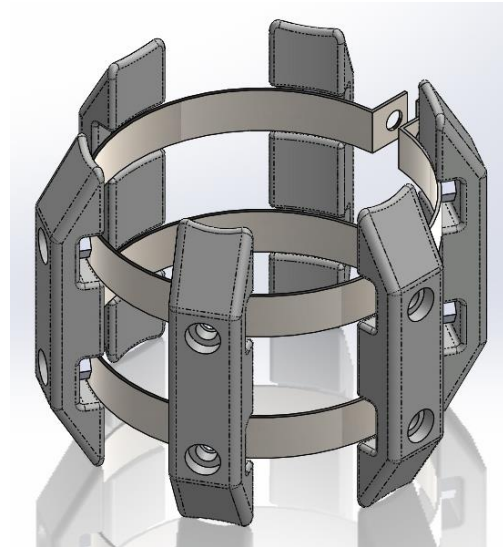
Zinc sacrificial anode for corrosion protection of Pump Units

## Application

The LORENTZ Sacrificial Anode is designed for use with LORENTZ pump units. Where a pump unit operates in aggressive water conditions acidic water can attack the surface of the high quality-stainless steel pump unit. This corrosion reduces the life expectancy of the product. The LORENTZ Sacrificial Anode reduces corrosion at pump end and extends the pump life time.

## ORDER INFORMATION

- Item no.:** 19-002630  
**Product name:** Sacrificial Anode 4" motors
- Item no.:** 19-002632  
**Product name:** Sacrificial Anode 6" Motors



picture shows sample of 6" anode

## FEATURES

- Simple and cost effective part to reduce corrosion at pump end and motor
- Designed for installation around the body of 4" and 6" motors below the pump end.
- 4" version requires a minimum 6" well / 6" version requires a minimum 8" well
- Zinc anodes
- Stainless steel clamps and screws

## TECHNICAL DATA (installed)

Item No	motor	Qty. of anodes	Outer diameter	length	Zinc Weight	Zinc Surface
19-002630	4" motors	4	147 mm 5.78 in	160 mm 6.30 in	1.64 kg 3.63 lbs.	58300 mm <sup>2</sup> 90 inch <sup>2</sup>
19-002632	6" motors	6	185 mm 7.28 in		2.46 kg 5.43 lbs	87470 mm <sup>2</sup> 136 in <sup>2</sup>

## DIMENSION/WEIGHT

- Packing dimensions: 180 x 180 x 50 mm / 7.1 x 7.1 x 2.0 in
- Total packing weight: 2.0 kg / 4.4 lbs or 2.8kg / 6.2lbs